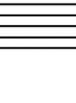
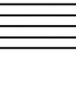
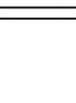
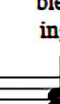
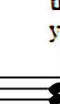
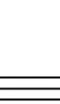
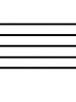
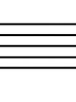
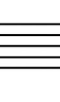
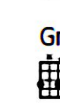
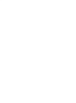
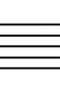
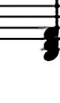
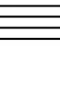
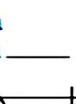
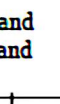
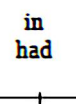
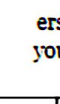
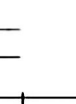
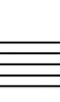
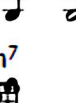
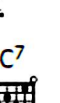
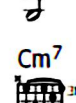
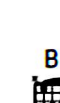
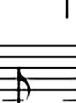
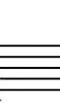
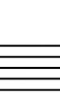
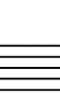
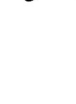
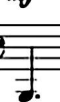


DON'T ASK ME WHY

Words and Music by
BILLY JOEL

Moderately, in 2

$\text{♩} = 50$



B \flat E \flat /B \flat B \flat Cm 7 B \flat

blink. feet. Oh, Oh, ev all 'ry your dog choic

B \flat Cm 7 B \flat /D C 7 Dm 7 C 7 /E

must es have made its you ev change 'ry your day, mind.

F 7 Gm 7 F 7 /A F 7 Gm 7 F 7 /A B \flat

ev Now 'ry your drunk cal must en have dar's his com drink. plete. Don't wait

8 $^{\text{va}}$ D 7 /A Gm B \flat 7 /F

for an - swers; just take your chanc-

Em^{7,5} Eb/F Bb Eb/Bb^{tr}

- es; don't ask me why.

Bb Eb/Bb^{tr} Bb Eb/Bb^{tr} 1. Bb Eb/Bb^{tr}

2. Bb Eb/Bb^{tr} Bb F

Mm, you can say the hu - man heart is on -

Eb^{3tr} F

- ly make be - lieve, and I am on - ly

Sheet music for a song in B-flat major, featuring a vocal line and piano accompaniment. The lyrics are: "fight - ing fire with fire. But you are still a vic - tim of the ac - ci - dents you leave, as sure as I'm a vic - tim of de - si - yi - yi - re. All the ser - Yes - ter - day".

Chord progressions and guitar diagrams are provided for the piano accompaniment:

- Bb (first system)
- El/Bb, Bb (second system)
- G (third system)
- C (fourth system)
- G7 (fifth system)
- C7 (sixth system)
- F7 (seventh system)
- Bb (eighth system)
- Cm7 (ninth system)
- Bb/D (tenth system)

Chords: Bb, Cm7, Bb/D, C7, Dm7, C7/E

- wants you in were your an new on - ho ly - tel child.

Chords: F7, Gm7, F7/A, F7, Gm7, F7/A, Bb, Eb/Bb

throw Now their your ros ghosts es have at gone your a - feet. way. Oh, Oh,

Chords: Bb, Cm7, Bb/D, Bb, Cm7, Bb/D

Fool You them can all, kill but, them ba in by, the

Chords: C7, Dm7, C7/E, F7, Gm7, F7/A

I clas - can sic tell. style. You're Now no you stran - par -

F⁷ Gm⁷ F⁷/A B^b D⁷/A

- ger to the street. Don't ask _____ for fa -
 - lez - vous fran - çais." Don't look _____ for an -

Gm B^{b7}/F Em^{7b5}

- vors. Don't talk _____ to stran - gers. Don't ask _____
 - swers. You took _____ your chanc - es. Don't ask _____

To Coda

E^b/F B^b E^b/B^b B^b E^b/B^b

me why. _____
 me why. _____

S^{tr} B^b E^b/B^b B^b F

f

This piano score is written for a piece in B-flat major, indicated by two flats in the key signature. The music is organized into five systems, each consisting of a treble and bass staff. The first system begins with a treble staff containing triplets of eighth notes and a bass staff with a steady eighth-note accompaniment. Above the first measure of the treble staff is a chord diagram for E-flat major (E-flat, G, B-flat). The second system continues the melodic and harmonic development, featuring a treble staff with triplets and a bass staff with eighth-note accompaniment. Above the first measure of the treble staff is a chord diagram for F major (F, A, C), and above the fifth measure is a chord diagram for B-flat major (B-flat, D, F). The third system shows a treble staff with triplets and a bass staff with eighth-note accompaniment. Above the first measure of the treble staff is a chord diagram for G major (G, B, D). The fourth system continues the piece, with a treble staff featuring triplets and a bass staff with eighth-note accompaniment. Above the first measure of the treble staff is a chord diagram for C major (C, E, G), and above the fifth measure is a chord diagram for G major (G, B, D). The fifth system concludes the piece, with a treble staff featuring a melodic line and a bass staff with eighth-note accompaniment. Above the first measure of the treble staff is a chord diagram for C7 major (C, E, G, B-flat). The piece ends with a final chord in the treble staff, marked "N.C." (No Chord), and the instruction "D.S. al Coda" (Da Segno al Coda) is written above the final measure.

E \flat

F

B \flat

G

C

G

C 7

N.C.

D.S. al Coda

System 1:

Guitar Chords: B \flat , E \flat /B \flat (tr), B \flat , E \flat /B \flat (tr)

Vocal: [Long note]

Piano: [Melody]

System 2:

Guitar Chords: B \flat , E \flat /B \flat (tr), B \flat , E \flat /B \flat (tr), B \flat , E \flat /B \flat (tr)

Vocal: Don't ask — me why —

Piano: [Melody]

System 3:

Guitar Chords: B \flat , E \flat /B \flat (tr), B \flat , E \flat /B \flat (tr), B \flat

Piano: [Melody]