

# What You Mean To Me

Words and Music by  
Gary Barlow and Eliot Kennedy

♩ = 110



**BARRIE:**

Stand-ing



**SYLVIA:**

here, all at once all the words run dry. Some-thing



changed, can't ex - plain and I can't de - ny.

© Copyright 2014 Sony/ATV Music Publishing.  
All Rights Reserved. International Copyright Secured.



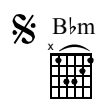
BARRIE:

BOTH:

Turn - ing \_ in cir - cles \_ and blur - ring \_ the lines. The \_ un -



spo - ken \_ is call - ing \_ us to - night. \_ I won't \_



lie, \_ I'm a lit - tle bit fright -



- ened of my im - ag - i - na - tion. Swear I'll try \_

Bbm



Db



but I'm feel - ing en - light -

Ab



Eb/G



Bbm



- ened, you're my in - spi - ra - tion. We can \_ fly if \_ we want \_

Db



Ab



Eb/G



to, I prom - ise you faith \_ will give \_ you wings. \_ Just take the

**BARRIE:**

Gb



Db



se - cond star on the right, straight a - head \_ 'til the morn - ing light. \_



BOTH:

Just } take the se - cond star on the right,  
 2° Let's }



To Coda ☉

straight a - head \_ 'til the morn - ing light. \_\_\_\_\_



BARRIE:

Ev - 'ry word in ev - 'ry sen - tence does - n't seem to make a diff - 'rence,



noth - ing can ex - plain \_ just what you mean to me.

D $\flat$



Cm7



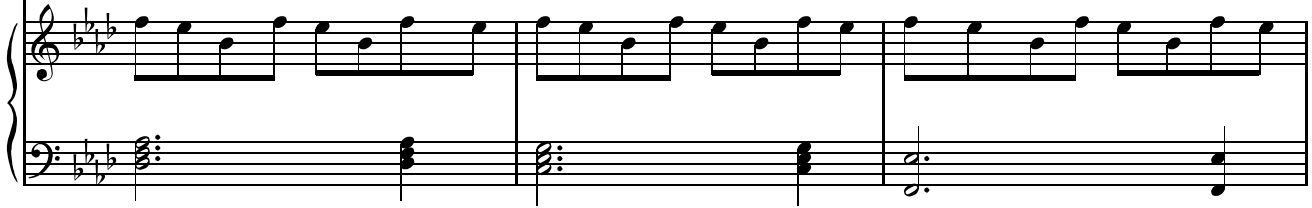
Fm7



SYLVIA:



Ev-'ry shape and all the col-ours, all the love from all the lo-vers nev-er could ex-press just what you



Cm/E $\flat$



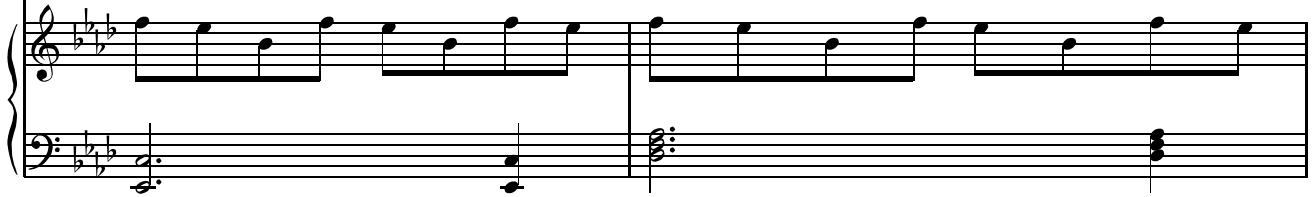
D $\flat$



mean to me

BARRIE: Ev-'ry in - stinct ev-'ry feel - ing,

SYLVIA: Ev - 'ry shade, \_\_\_\_\_ ev - 'ry,



Cm7



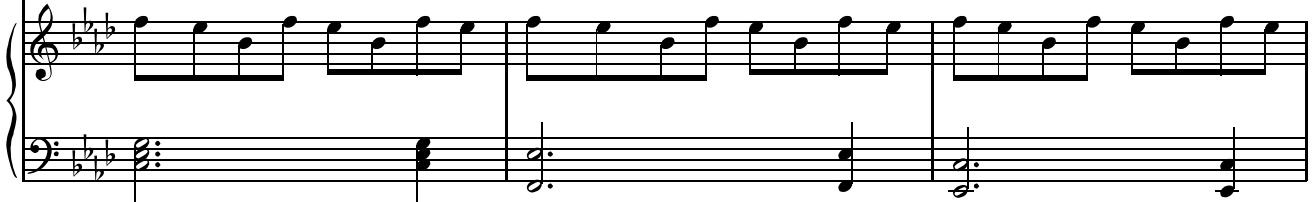
Fm7



Cm/E $\flat$



breath-less all my sens-es reel-ing, can-not e-ven say just what you mean to me. \_  
breath - less, sens-es reel - ing... what you mean to me. \_



D $\flat$



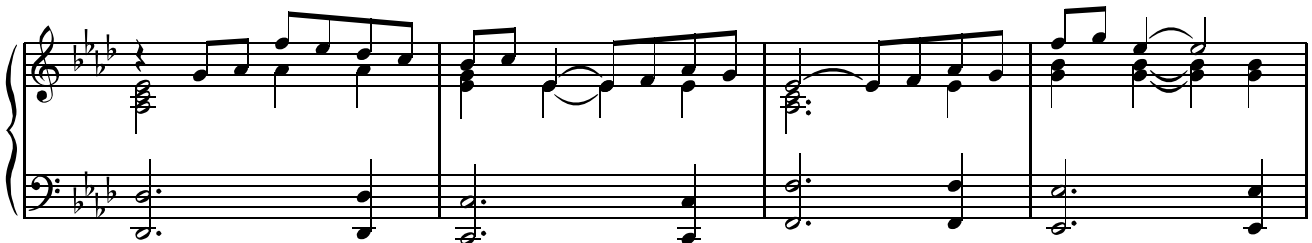
Cm7



Fm7



Cm/E $\flat$



**D $\flat$**   
**Cm7**  
**Fm7**  
**Cm/E $\flat$**

**D $\flat$**   
**Cm7**  
**Fm7**  
**Cm6/E $\flat$**

*D.S. % al Coda*  $\phi$

**BOTH:**

Turn - ing\_ in cir - cles\_ and blur - ring\_ the lines. I won't\_

**Slower**

**Coda**  $\phi$  **D $\flat$ maj7**  
**A $\flat$ add9/C**

Ev - 'ry star that's ev - er fall - en knows the way to where we're go - ing,

**Fm**  
**D $\flat$ sus2**  
**A $\flat$ add9**

now I real-ly know just what you mean to\_ me.\_