

JESUS LOVES ME

SheetMusic-Free.com

Whitney Houston

By
ANNA B. WARNER
and WILLIAM B. BRADBURY

Arrangement by
BEBE WINANS
and CEDRIC CALDWELL

Slowly

Ebmaj9
5fr.

Abmaj7
x 4fr.

Abm7 4fr.

Gm7 3fr.

Cm7 3fr.

mf smoothly

F/A 0

Bb G/B x0 Cm 3fr.

Cmaj7 000

C7-5 3fr.

Fmaj7 x 0

B13-9

Yes, Je - sus loves me, for the

Em7 0 0

Am7 0 0 0

D13 4fr.

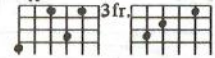
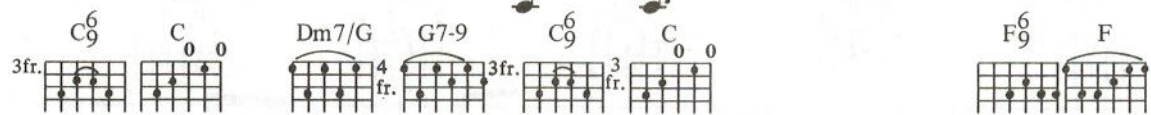
D9+5 4fr.

G7 x000

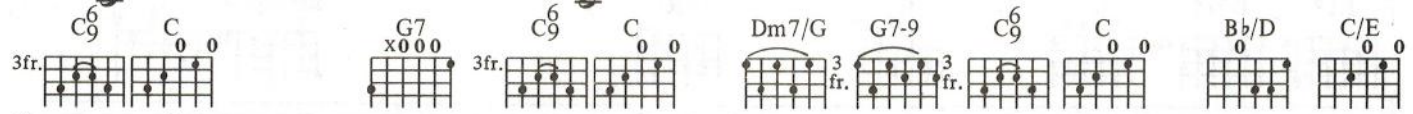
C 0 0

F/C

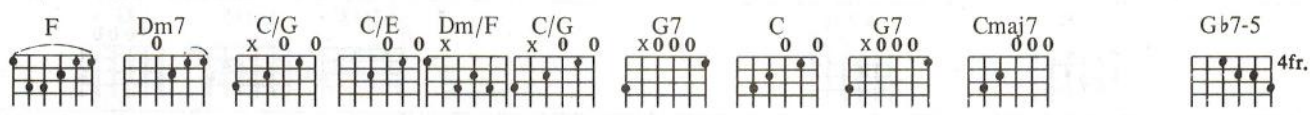
Bi - ble tells me — so.

Je - sus loves - me, this I know - for the Bi - ble
 Press - ing on the up - per way - Al - ways guide - me,



tells me so. Lit - tle ones - to Him be - long -
 Lord - I pray. Un - de - serv - ing and stub - born - ly -



they are weak but He is strong. Yes, Je - sus
 nev - er fail to learn me still.

loves me... Yes, Je - sus loves me...

Cmaj7 000
 C7-5 3fr.
 Fmaj7 x 0
 B13-9
 Em7 0 0 0
 Am7 0 0 0

Yes, Je - sus loves me for the Bi - ble

1. D13 4fr. D9+5 4fr. G7 x000 C 0 0 F/C Bb(addC) x 3fr. C 0 0

tells me... so.

F/C C/Bb 0 C 2-D13 4fr. D9+5 4fr. G x000

tells me

Ebmaj7



A7-9



Abmaj7



4fr.

Abm7



4fr.

Gm7



3fr.

Cm7



3fr.



so.

Yes,

Je - sus



F/A



Bb



G/B



Cm



A7/C#



Dm



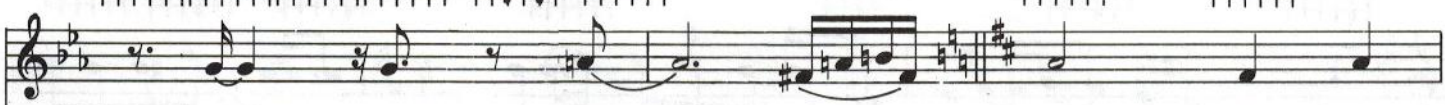
Dmaj7



A>7-5



3fr.



loves,-

me,

loves. —

Oh, —

yes,

Je - sus



Gmaj7



C#13-9



F#m7



Bm7



E13



G(addA)



Em7/A



Ab7



4fr.



loves me,—

for the Bi

ble

tells

me



2fr. X 2fr. X 2fr. X 2fr. X 0

so, for the Bi - ble tells me so.

F#m7 Bm7 Gmaj9 Gm(maj7) 3fr. F#m7 Bm7 Em7 0 0 0

And I'm nev - er a - lone. See, some-times I'm lone - ly but nev - er a - lone, no, for the

D/A 00 Bm7 E13 6 fr. E9+5 6 fr. Em7 0 0 0 x0 D/F# x000 G 00 D/A 00 Bm7

Bi - ble tells, for the Bi - ble tells,

for the Bi - ble tells me

Detailed description: This system contains the first four measures of the piece. At the top, there are six guitar chord diagrams for the vocal line, with the last two labeled '6 fr.'. Below these is a vocal staff in treble clef with a key signature of one sharp (F#) and a common time signature. The lyrics 'for the Bi - ble tells me' are written below the vocal staff. Below the vocal staff is a grand staff (treble and bass clefs) for piano accompaniment. The piano part features a rhythmic accompaniment with chords and moving lines in both hands.

so.

Repeat and fade

Detailed description: This system contains the fifth and sixth measures. It begins with a vocal staff showing a whole note 'so.' followed by a double bar line and repeat sign. Above the vocal staff are guitar chord diagrams for D, G/D, C6, and D. The piano accompaniment continues with a similar rhythmic pattern. The system concludes with a double bar line and repeat sign, with the instruction 'Repeat and fade' written above the staff.

Detailed description: This system contains the seventh and eighth measures. It starts with guitar chord diagrams for C6, D, G/D, C6, and D. The piano accompaniment continues with the same rhythmic accompaniment. The system ends with a double bar line and repeat sign.